

USING YOUR LAPTOP (PC)

FALL 2003

GETTING STARTED

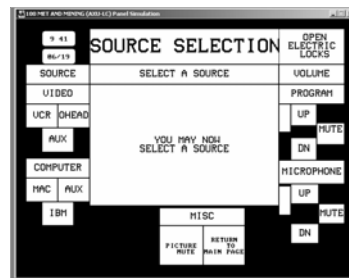
1. Locate the laptop VGA cable. In some rooms, it is attached to the interface, and in others it is in the cabinet (try the microphone drawer).

2. Plug the end of the VGA cable into your laptop. If the cable is not plugged into the interface, plug the other end into the "input" jack.



3. Turn on the projection system. Some rooms have a push button control panel, and others have a touch screen control panel.

- a) For a push button room, press the "power" button to start the projector. Then select the input that you want, in this case, the laptop. The button will show up as either "input3" or "pc3."
- b) For a touch screen room, press anywhere on the screen to start. Press the "activate system" or "audio/video" button to start the system. When you get to the source selection page, press the "aux" computer button.



4. Remember to shut down the projection system when you leave.

- a) For push button rooms, just press the "power" button again.
- b) For touch screen rooms, press "return to main menu," then "shutdown." Most rooms will ask you to confirm shutdown.

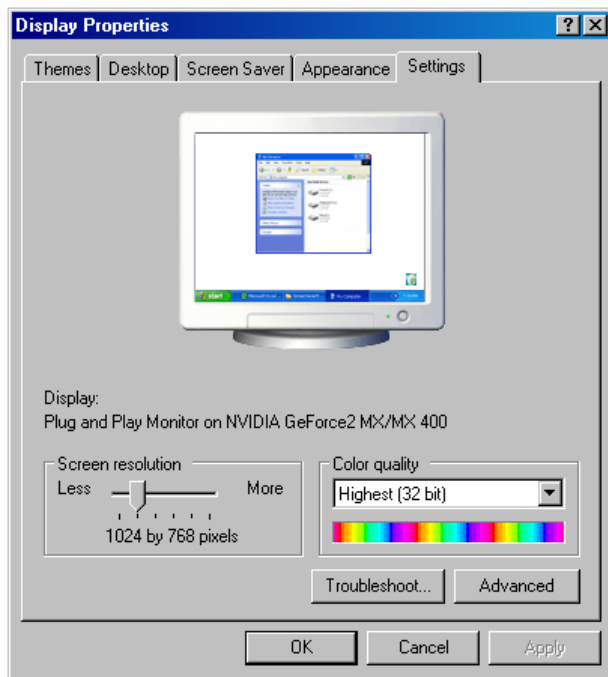
ADJUSTING THE MONITOR DISPLAY (WINDOWS)

Images shown are for Windows XP. Other versions of Windows may appear slightly different. It is recommended that your laptop be shut off before plugging in the VGA cable.

1. You will need to mirror the image from your laptop desktop to the projection system. Most laptops have a hotkey to do this, and you should check your instruction manual if you do not know what it is. In general, it involves pressing function + one of the F buttons (example Function + F3). You may need to press the hotkey several times before the display shows on both the laptop and the projector.
2. After getting the image mirrored, you may need to adjust your display settings. Right-click on an empty area of the desktop, and select properties.

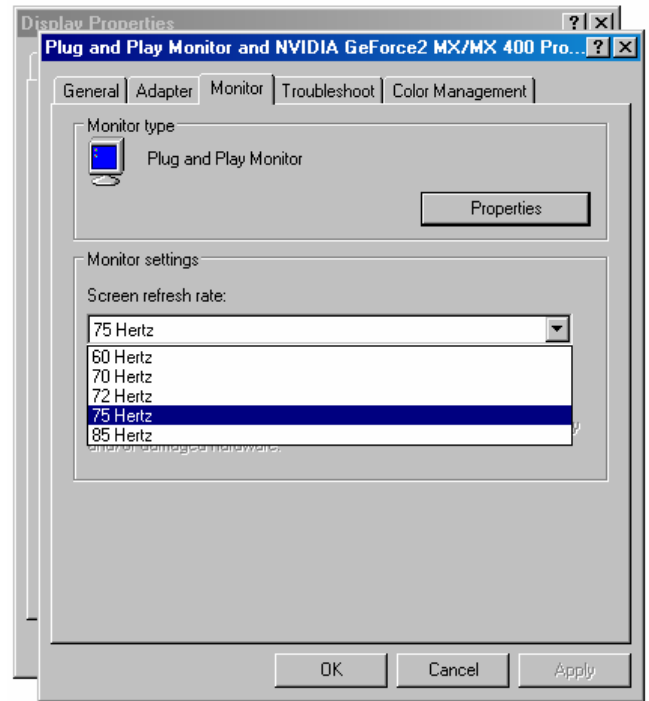


3. Click on the “Settings” tab.



4. Adjust the screen resolution by sliding the bar. The projectors will support 800x600 and/or 1024x768.

5. You may need to adjust the refresh rate. Click on the “advanced” button from the settings page.
6. Click on the monitors tab.

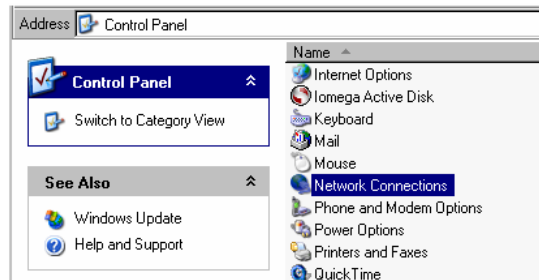


7. Change the refresh rate by selecting the one you want from the pull down menu. The proper setting varies in each room from 60-75 Hz. If the refresh rate is set improperly, the image may not display or may be cut off.

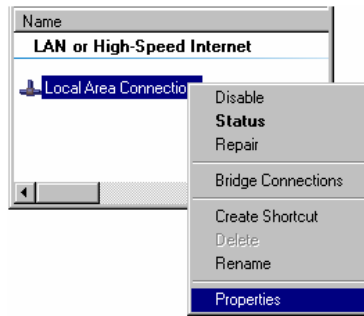
CONFIGURING THE NETWORK SETTINGS (WINDOWS)

1. Locate the network jack. In most rooms, it is on the front of the cabinet. Most rooms do not have a network cable in them, so please bring one with you. Plug one end of the cable into the network jack and the other end into your network card/adaptor. Check to make sure that the link light comes on after plugging in the cable. If the light does not come in, you may have plugged the cable into the wrong jack.

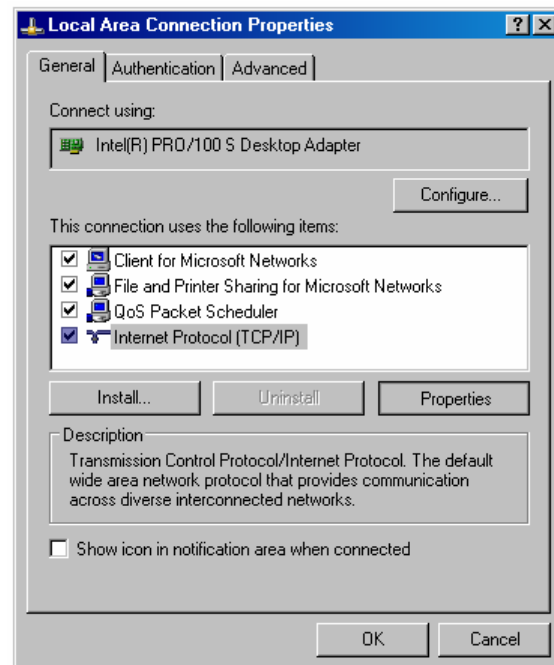
2. Go to the control panel of your laptop, and open the network connections panel.



3. Right-click on “Local Area Connection,” and select Properties.



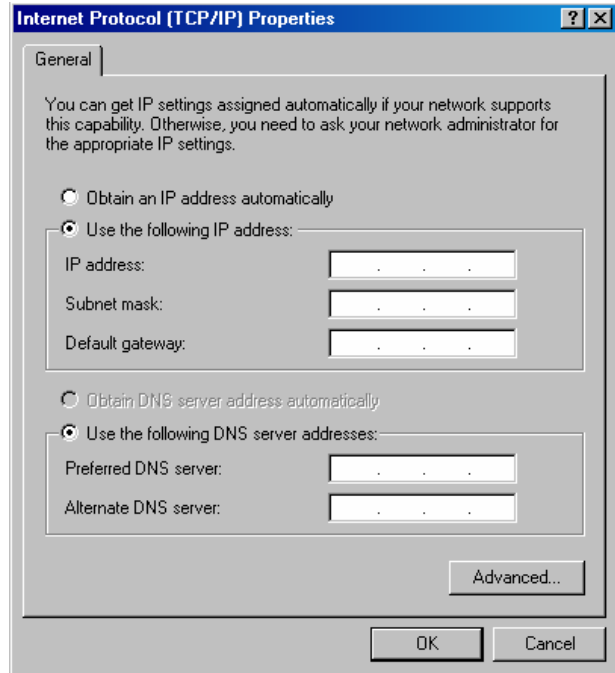
4. Select “Internet Protocol (TCP/IP)” and click the “properties” button.



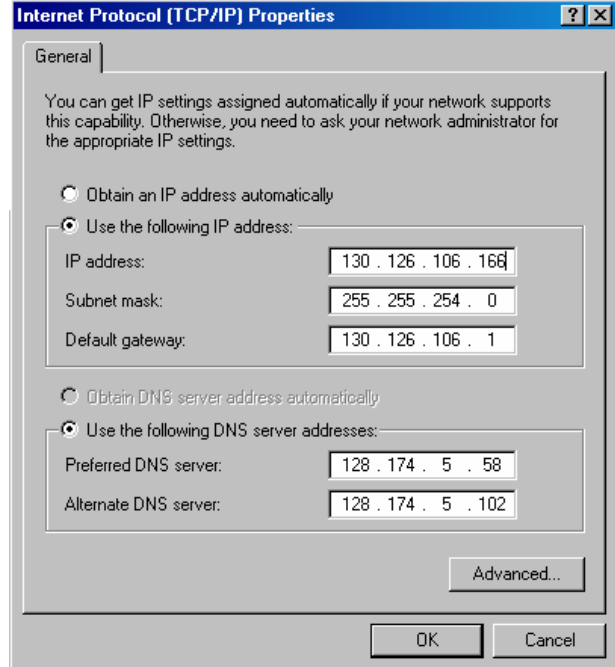
(Continued on page 4)

(Continued from page 3)

5. Check the circles for “Use the following IP address” and “Use the following DNS server addresses.”



6. Enter the IP address, subnet mask and gateway that was provided to you by OIR. Enter the following numbers for DNS: 128.174.5.58 and 128.174.5.102. Click OK.



The IP address, subnet mask and gateway shown above are for demonstration purposes only - do not use unless specifically instructed by ClassTech.

ABOUT CLASSTECH

In support of faculty and administration at UIUC, CITES Classroom Technologies (ClassTech) installs, supports and maintains the Integrated Teaching Systems (ITS) on campus. ClassTech also provides consultation services to departments on equipment purchases and installations, and requirements for appropriate facilities, technology and support. When appropriate, we coordinate resources including contacting qualified vendors or rental equipment.

ClassTech can design an audio-visual package and carry it through to complete installation and the training of staff.

Repair and Maintenance: The engineering staff is available for preventative maintenance and/or repairs of audio, video, and related equipment whenever possible on a fee basis. This service can be provided to individual departments, units, or offices with multimedia installations or equipment. For further information please call 333-0506.

Our mission statement:

The purpose of ClassTech is to serve the campus by providing the best possible instructional media support through effective implementation, training, and servicing of instructional media systems, contributing to a state-of-the-art teaching environment and improving the instructional capabilities of its instructors.

Our classrooms:

Nearly one-hundred classrooms on campus are outfitted with an Integrated Teaching System (ITS). For information concerning these systems, contact us at 333-8165 or by e-mail at classtech@uiuc.edu.

UNIVERSITY OF ILLINOIS AT URBANA-CHAMPAIGN

CITES Classroom Technologies

Room 95 Bevier Hall, MC-187

905 S. Goodwin Ave, Urbana, IL 61801

Phone: (217) 333-0506

Email: classtech@uiuc.edu

Web: <http://ww.cites.uiuc.edu/classtech>